

コードレス電動トルクレンチ

Cordless Nutrunner

Torque range from 190 to 4,800 Nm

2-STCL

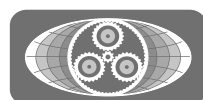
強カトルク 4800 Nm!

新ラインアップ 6機種登場。

毎分回転数 71.6 rpm (※PL2-05STCL)



PLARAD[®]
Torque & Tension Systems



The new cordless nutrunner **2-STCL** *Entirely in a class of its own*



We have clearly redefined mobile bolting to new levels. With the new 2-STCL battery tool Plarad is introducing to the market place a successor to the previously brilliant predecessor tool the STCL. A decisive step forward has been achieved with the newest gearbox technology which enables simpler handling, reduced weight and size. Mobile cordless bolting is now safer due to the additional automatic locking of the motor and gearbox. Versions of the tool are available up to a maximum output of 4 800 Nm. Optional Diagnostic Setting Software with power step lock and tool diagnostics enables the tool to be optimally set up for your specific bolting application.

The Advantages:

- Optimised handling
- Even lighter and compacter than its predecessor
- Automatic locking of gearbox and motor
- Integrated free turning of motor
- Active two step battery charge indicator
- 6 sizes up to a maximum of 4 800 Nm

- Fulfils the requirements and conditions of EN 1090 for structural steel.
- Optional: Diagnostic Setting Software (DSS) with step lock and tool diagnostics
- Scope of delivery: includes qty. 2 – 5 amp batteries, charger, LED battery torch and a robust professional tool case.



ハイスピード締付、トルク設定60段階

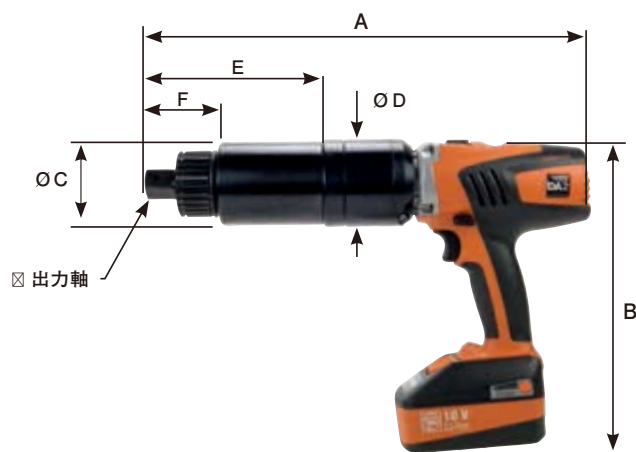
The battery nutrunner STCL has a newly developed gearbox; it has been equipped with additional improved features in comparison to the predecessor PL2-STCL.



バッテリー容量 テスト参考値

機種名	ボルト締め本数	ボルト径×長さ	トルク(Nm)
PL2-05STCL	680 本	M 24×95	420
PL2-10STCL	350 本	M 27×95	670
PL2-20STCL	200 本	M 27×95	1400
PL2-30STCL	100 本	M 36×95	2100
PL2-36STCL	95 本	M 36×95	2300
PL2-48STCL	80 本	M 52×95	3600

* 既に締まっているボルトの緩めやソフトジョイントなどボルト条件によって
バッテリー持続時間は異なります。

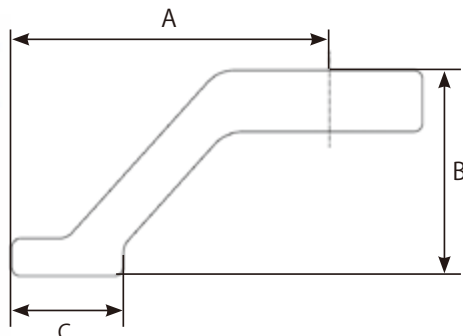


コードレス電動トルクレンチ 6機種の仕様・寸法

機種名	出力トルク (Nm)	rpm ギア1	rpm ギア2	rpm ギア3	rpm ギア4	A (mm)	B (mm)	Ø C (mm)	Ø D (mm)	E (mm)	F (mm)	出力軸 (mm)	重量 (kg)
PL2-05STCL	190 - 550	8.4	16.6	37.0	71.6	365	245	68,5	72	144,5	60,5	19口	5.35
PL2-10STCL	240 - 1,000	5.3	10.8	24.5	48.0	365	245	68,5	72	144,5	60,5	19口	5.35
PL2-20STCL	270 - 2,000	3.0	5.6	12.7	24.6	405	245	80	72	140	61,5	25.4口	6.85
PL2-30STCL	380 - 3,000	2.3	4.6	10.3	20.9	405	245	80	72	140	61,5	25.4口	6.85
PL2-36STCL	430 - 3,600	1.8	3.3	7.8	15.3	405	245	80	72	140	61,5	25.4口	6.85
PL2-48STCL	550 - 4,800	1.4	2.9	6.4	12.9	437	245	86	72	168	83,5	38.1口	8.50

* PL2-05STCL、PL2-10STCL=トルク設定45段階。 PL2-20~PL2-48STCL=トルク設定60段階。

コードレス電動トルクレンチ
標準付属 反力受け
Standard reaction arm



機種名	A (mm)	B (mm)	C (mm)	重量 (kg)
PL2-05STCL	150	100	90	1.5
PL2-10STCL	150	100	90	1.5
PL2-20STCL	150	100	90	1.85
PL2-30STCL	190	110	90	2.4
PL2-36STCL	190	110	90	2.4
PL2-48STCL	210	130	90	3.25

Wide range of accessories

Various accessories (e.g.: inserts, power inverter, weldable rings, sockets and reaction arms) are available in standard and also in bespoke customer designs.



Optional DSS software

With the DSS setting software the operator can lock individual power steps, which enables tightening at a defined torque. Further the diagnostic information can be used for the preventative maintenance of the tool.



株式会社 日本プララド

<http://www.plarad.net/> E-Mail : info@plarad.net

本 社 〒651-2404 兵庫県神戸市西区岩岡町古郷 255-6
TEL 078-967-3556 FAX 078-967-3567

関東支社 〒230-0062 神奈川県横浜市鶴見区豊岡町 26-10-101
TEL 045-570-5333 FAX 045-585-5656

全国拠点 札幌、仙台、埼玉、横浜、大阪、神戸、愛媛、北九州