



200 MPa ~ 300 MPa

150 MPa

100 MPa

### FEATURES

- Output pressures up to 300 MPa.
- Mounted in robust tubular steel transportable frame 400 x 400 x 440 mm.
- Complete with, air inlet filter, pressure regulator and lubricator.
- Dual scale, damped, calibrated oil pressure gauge.
- 8 litre capacity reservoir fitted with extra direct return.
- Medium ISO 10 Oil.

### OPTIONS

- Stainless Steel Frame.
- Chart Recorder.
- Water Medium.
- Stainless Steel Tank.
- Stroke Counter.
- Remote Control.
- Pressure Transducer.
- Digital Output to PC.
- Custom Designs.

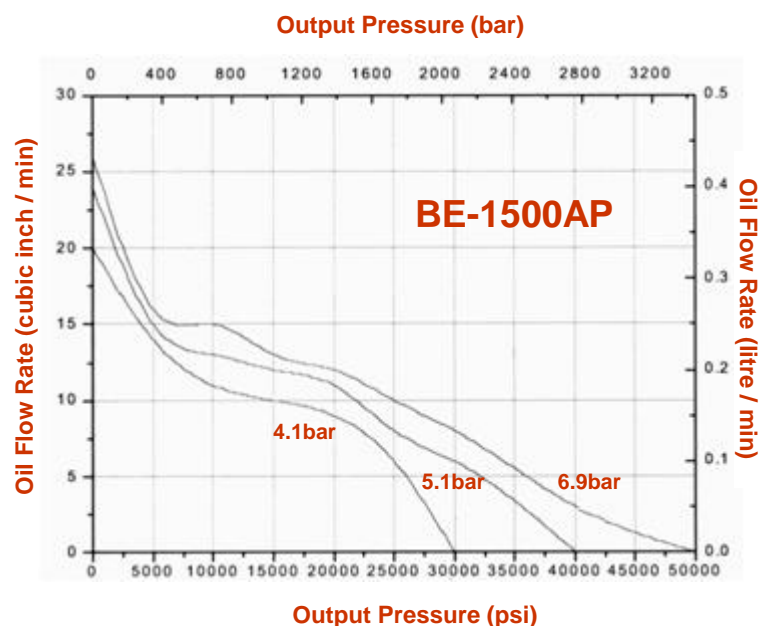
	最高油圧	最大吐出量	必要エア一圧	エア一消費量	重量
機種名	MPa	低圧時 / 高圧時cc / 分	MPa	L / 分	kg
BE-1000AP	100	700 cc / 330 cc / 分	0.4~0.7	800	19.5
BE-1500AP	150	400 cc / 200 cc / 分	0.4~0.7	800	19.5
BE-2500AP	250	700 cc / 250 cc / 分	0.5~0.7	1600	23
BE-3000AP	300	480 cc / 230 cc / 分	0.5~0.7	1600	23



## BE-1500AP designed for use with all PLARAD 150 MPa tooling

This easy to use, air driven hydraulic pump is mounted in a tubular steel transportable frame painted blue. The pack is supplied complete with, air inlet connector, air filter, air pressure regulator, air lubricator, air pressure gauge, air pressure limit valve, pump on/off control, oil reservoir, oil pressure release valve, oil pressure gauge, gauge guard, air/hydraulic pump and high pressure oil outlet through a self sealing quick connect coupling.

BE-1500AP	仕様
最高油圧	150MPa (1500bar)
最大吐出量	400 cc / 分 (低圧時) 200 cc / 分 (高圧時)
必要エア一圧	0.4 - 0.7 MPa
エア-消費量	800 L / 分
外形寸法	長さ400mm x 幅400mm 高さ440mm
重量	19.5 kg
オイル容量	8.5 L 油圧作動油 ISO10



Part No BT-1506 is designed for use with all PLARAD 150 MPa tooling and represents the best compromise between price and performance.

Pumps for 100 MPa, 200 MPa and 250 MPa working pressures are also available.

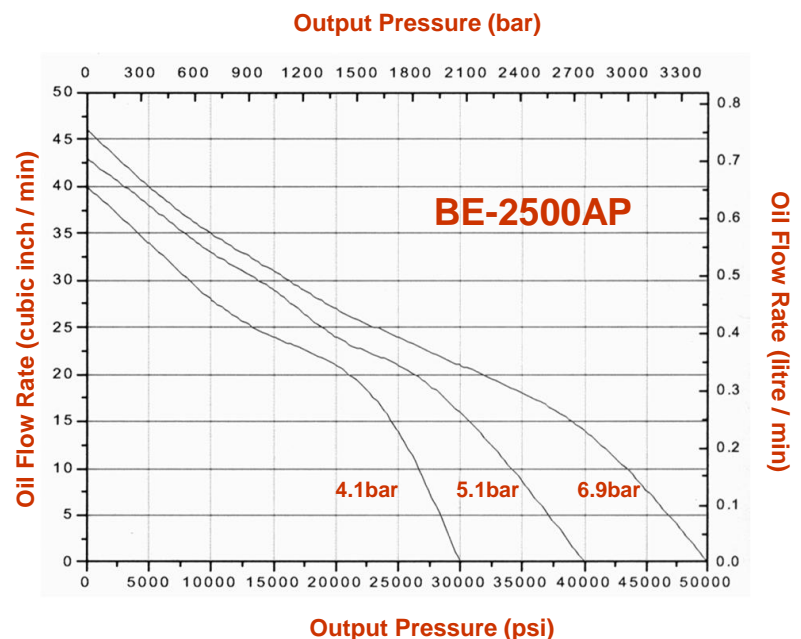
Custom built power packs, with any number of outlets, to suit your existing tooling or with special features are available on request.



## BE-2500AP designed for use with all PLARAD 250 MPa tooling

This easy to use, air driven hydraulic pump is mounted in a tubular steel transportable frame painted blue. The pack is supplied complete with, air inlet connector, air filter, air pressure regulator, air lubricator, air pressure gauge, air pressure limit valve, pump on/off control, oil reservoir, oil pressure release valve, oil pressure gauge, gauge guard, air/hydraulic pump and high pressure oil outlet through a self sealing quick connect coupling.

BE-2500AP	仕様
最高油圧	250MPa (2500bar)
最大吐出量	700 cc / 分 (低圧時) 250 cc / 分 (高圧時)
必要エア一圧	0.5 – 0.7 MPa
エア-消費量	1600 L / 分
外形寸法	長さ400mm x 幅400mm 高さ440mm
重量	23 kg
オイル容量	8.5 L 油圧作動油 ISO10



Part No BT-2506 is designed for use with all PLARAD 250 MPa tooling and represents the best compromise between price and performance.

Pumps for 100 MPa, 150 MPa and 200 MPa working pressures are also available.

Custom built power packs, with any number of outlets, to suit your existing tooling or with special features are available on request.

This hand pump can be used with all PLARAD tooling and equipment. The pump has both high and low pressure pistons and is supplied complete with, a 110 mm diameter pressure gauge, pressure release valve, internal pressure safety relief valve, a 2.4 litre oil reservoir and a self sealing quick connect coupling.

Hand pumps should only be used with one or two tensioning tools. When simultaneous operation of several tools is being considered PLARAD recommends the use of an air driven pump.



機種名	BE-1000HP	BE-1600HP	BE-2500HP
最高油圧	100 MPa	160 MPa	250 MPa
吐出量	20cc / stroke 低圧 1cc / stroke 高圧	20cc / stroke 低圧 1cc / stroke 高圧	20cc / stroke 低圧 0.8cc / stroke 高圧
寸法 mm	全長620 x 幅130 x 高さ170	全長620 x 幅130 x 高さ170	全長620 x 幅130 x 高さ170
圧力ゲージ	110 mm	110 mm	110 mm
重量	10.1 kg	10.1 kg	11 kg
タンク容量	1.0 L 油圧作動油 ISO10	2.4 L 油圧作動油 ISO10	2.4 L 油圧作動油 ISO10
ハンドル 操作力	230 N	370 N	420 N

- ・ ボルトテンショナーを2台連結して使用する場合はエアーポンプが推奨です。
- ・ 大容量 2.4 L アルミ製オイルタンク
- ・ 大型 110mm 圧力ゲージ内蔵
- ・ 最高油圧 400MPa仕様モデルまであります。

All PLARAD tooling and equipment is colour coded to indicate the maximum working pressure.



カラー 最高使用油圧

Green 100 MPa

Blue 150 MPa

Red 250 MPa

タイプ	最高使用圧力	最低破壊圧力	最小曲げ半径
100MPaホース	100 MPa	260 MPa	95mm
150MPaホース	150 MPa	450 MPa	150mm
250MPaホース	250 MPa	655 MPa	200mm
300MPaホース	300 MPa	—	—
400MPaホース	400 MPa	—	—

### FEATURES

- 5 mm bore with plastic inner core.
- Colour coded plastic caps
- Clear PVC sleeve for added protection.

The hoses are plastic coated and the quick connectors are fitted with plastic dust covers. Both are coloured according to the code.

Hoses are assembled with a clear PVC cover for additional protection against abrasion and chemical attack.

オプション:

高圧油圧ホースの安全2重プロテクトカバー  
透明PVC(ポリ塩化ビニール)カバー付き。

仕様カラーは予告なく変更になる場合がございます。  
ご了承下さい





100MPa

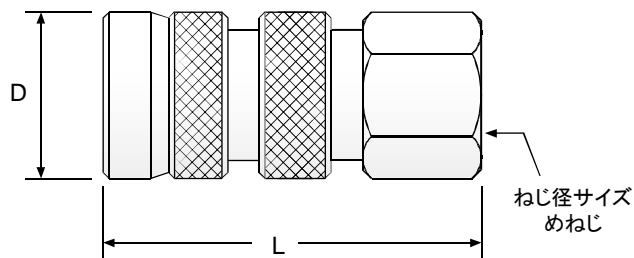


150MPa

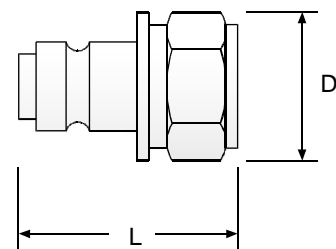


300MPa

【 メスカプラ 】



【 ニップル 】



最高使用圧力	最低破壊圧力	種類	ねじ径サイズ	全長 L (mm)	直径 D (mm)	六角対辺 (mm)	重さ (g)
100MPa	260MPa	メスカプラ	G 1/4"	61.3	28	24	170
		ニップル	G 1/4"	38	25.4	22	60
150MPa	300MPa	メスカプラ	G 1/4"	61.3	28	24	165
		ニップル	G 1/4"	38	25.4	22	60
200MPa	400MPa	メスカプラ	G 1/4"	64.3	30	24	210
		ニップル	G 1/4"	38	25.4	22	60
300MPa	600MPa	メスカプラ	M16×1.5	64	30	22	210
		ニップル	M16×1.5	55.3	25	22	125

- ・ 取付け部のねじ径サイズ: めねじ G 1/4" (旧JIS規格 PF 1/4")
- ・ 使用温度範囲: - 30℃ ~ + 100℃
- ・ 取付けトルク: 40~50Nm